



**PERFECT DM101
DUALMOTOR UPRIGHT
VACUUM CLEANER**



For IMIG, INC.
Call 1-631-643-7060

IMPORTANT SAFEGUARDS

When using an electrical appliance, basic precautions should always be followed, including the following:

READ ALL INSTRUCTIONS BEFORE USING THIS VACUUM CLEANER.

WARNING

- Do not use outdoors or on wet surfaces.
- Do not use with damaged cord or plug. If vacuum cleaner is not working as it should, has been dropped, damaged, left outdoors, or dropped in water, return it to a service center before using. This vacuum cleaner has no user serviceable parts.
- Close supervision is necessary when any appliance is used by or near children.
- Use only as described in this manual. Use only manufacturer's recommended attachments.
- Do not allow vacuum cleaner to be used as a toy or to run unattended at any time.
- Keep hair, loose clothing, fingers, feet and all parts of body away from openings, rotating agitator and moving parts.
- Do not operate cleaner in bare feet or when wearing open toe shoes or sandals.
- Do not pick up anything that is burning or smoking, such as cigarettes, matches, or hot ashes.
- Avoid picking up hard, sharp objects with the cleaner. They may damage the cleaner and the bag.
- Do not use without dust bag in place. Shake bag frequently when picking up very fine materials such as powder.
- Use extra care when cleaning stairs.
- Do not put any object into openings. Do not use with any opening blocked; keep free of dust, lint, hair, or anything that may reduce air flow.
- Do not pull or carry by cord, use cord as a handle, close door on cord or pull cord around sharp edges or corners. Do not run appliance over cord. Keep cord away from heated surfaces.
- Always disconnect cord from electrical outlet before servicing the cleaner. Unplug cleaner when not in use. Turn off all controls before unplugging. Do not unplug by pulling the cord. To unplug, grasp the plug, not the cord.
- Never handle plug or appliance with wet hands.
- This machine is equipped with an automatic thermal protection device. If the motor gets too hot, the thermal device will open and automatically reset after the motor cools down.

SAVE THESE INSTRUCTIONS

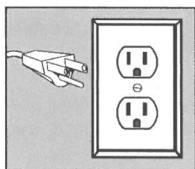
For Household and Commercial Use

GROUNDING INSTRUCTIONS

This appliance must be grounded. If it should malfunction or break down, grounding provides a path of least resistance for electric current to reduce the risk of electric shock. This appliance is equipped with a cord having an equipment-grounding conductor and grounding plug. The plug must be inserted into an appropriate outlet that is properly installed and grounded in accordance with all local codes and ordinances.

WARNING - Improper connection of the equipment-grounding conductor can result in a risk of electric shock. Check with a qualified electrician or service person if you are in doubt as to whether the outlet is properly grounded. Do not modify the plug provided with the appliance. If it will not fit the outlet, have a proper outlet installed by a qualified electrician.

This appliance is for use on a nominal 120-volt circuit and has a grounding attachment plug that looks like the plug illustrated. Make sure that the appliance is connected to an outlet having the same configuration as the plug. No adapter should be used with this appliance.



HOW TO ASSEMBLE THE PERFECT VACUUM

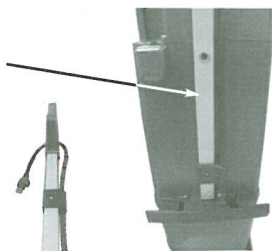
A

Unpack the enclosed packet
Enclosed in the packet is One Handle Bolt -- One Carry Handle



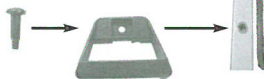
1

Take handle and align to back of vacuum --
Make sure metal guide is aligned in handle receptacle



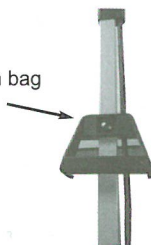
2

Push handle bolt through carry handle



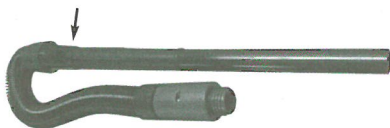
3

Align with hole in center of vacuum handle and push through into vacuum bag housing. Tighten bolt with screwdriver until it is completely secured.



4

Attach plastic wand to hose by pushing plastic wand into open hose cuff. Push until hose cuff and raised ring on wand meet



5

Attach hose to vacuum by screwing plastic machine end into bag housing



6

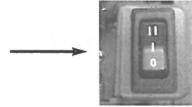
Attach cord holder to short machine cord and 50 feet cord



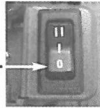
HOW TO USE VACUUM

The Perfect Vacuum is designed to be used on many types of carpets and bare floors. You can go from carpet to floors easily with the self-adjusting vacuum head.

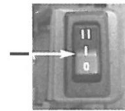
- B** The power switch is located on the back of the unit.
This power switch is a three way switch



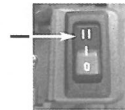
- O** Off Position



- I** Suction motor only --
This selection is for the using the vacuum attachments only



- II** This selection runs both suction motor and brushroll motor.
This selection is used for all cleaning of carpets and/or floors

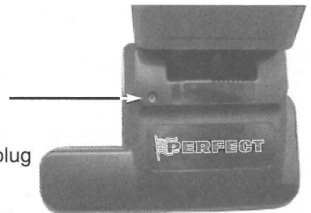


D Reset Switch

Reset switch is located on top of the vacuum hood

If brushroll gets jammed from any type of debris, brushroll motor will automatically shut off. Simply unplug the unit and clean out the blockage.

Reconnect the vacuum to the power outlet and turn on the unit. Press the RED reset switch on top of the vacuum hood and the brushroll motor will restart.

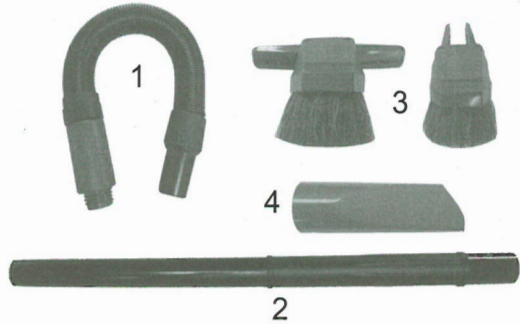


- E** The Perfect vacuum self adjusts to any floor or carpet. There are no knobs or levers to press or turn. Turn on vacuum and just push back and forth on any surface. The L-shaped base makes cleaning easy around tables and furniture. The handle goes all the way down so you can vacuum under beds and any small or tight areas where height restrictions are an issue.

ACCESSORIES

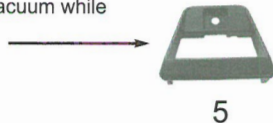
Your Perfect Vacuum comes with:

- 1 -- Stretchable Hose
- 2 -- Plastic Wand
- 3 -- Combo Dust / Upholstery Tool
- 4 -- Crevice Tool
- 5 -- Carry Handle



Pull the wand up and out of the bag housing of the vacuum. Attach the combo dust brush / Upholstery tool or crevice tool to the end of the wand. Support the vacuum with one hand while cleaning with the accessories. When finished, remove tools and replace wand into vacuum.

- 1 Stretchable Hose -- Hose stretches from 3 ft. to 6 ft.
- 2 Plastic Wand -- Used for hard to reach spaces such as ceilings, high areas, etc.
- 3 Combo Dust Brush / Upholstery Tool -- Used for furniture, shelves, table tops, lamps, chair rails, etc. Upholstery tool is used for draperies, cushions, sofas beds, etc.
- 4 Crevice Tool -- Used for tight spaces, corners, vents, etc.
- 5 Carry Handle -- The carry handle is used to support vacuum while transporting from location to location



FILTERS

Change Filters frequently to keep your Perfect Vacuum running at optimal efficiency

A FILTER BAG

- 1 Make sure that vacuum is unplugged and in the OFF position.
- 2 To open bag cover, press the release button on top of the bag cover and open cover.
- 3 Remove used filter bag from vacuum and discard. DO NOT Re-Use Bag.
- 4 Insert NEW filter into vacuum.
- 5 Close cover and snap into place.
Safety feature -- If no bag is put into the machine, the vacuum will not turn on.
This saves the vacuum from unnecessary damage due to no bag filter in the unit.

B MOTOR INTAKE FILTER

- 1 Make sure vacuum is unplugged and in the OFF position.
- 2 Remove filter bag and then lift motor intake filter from the bag housing.
- 3 Wash filter or replace with a new filter. Wash in warm soapy water, rinse and let air dry.
- 4 Replace filter and put in bag filter.
- 5 Close cover and snap into place.

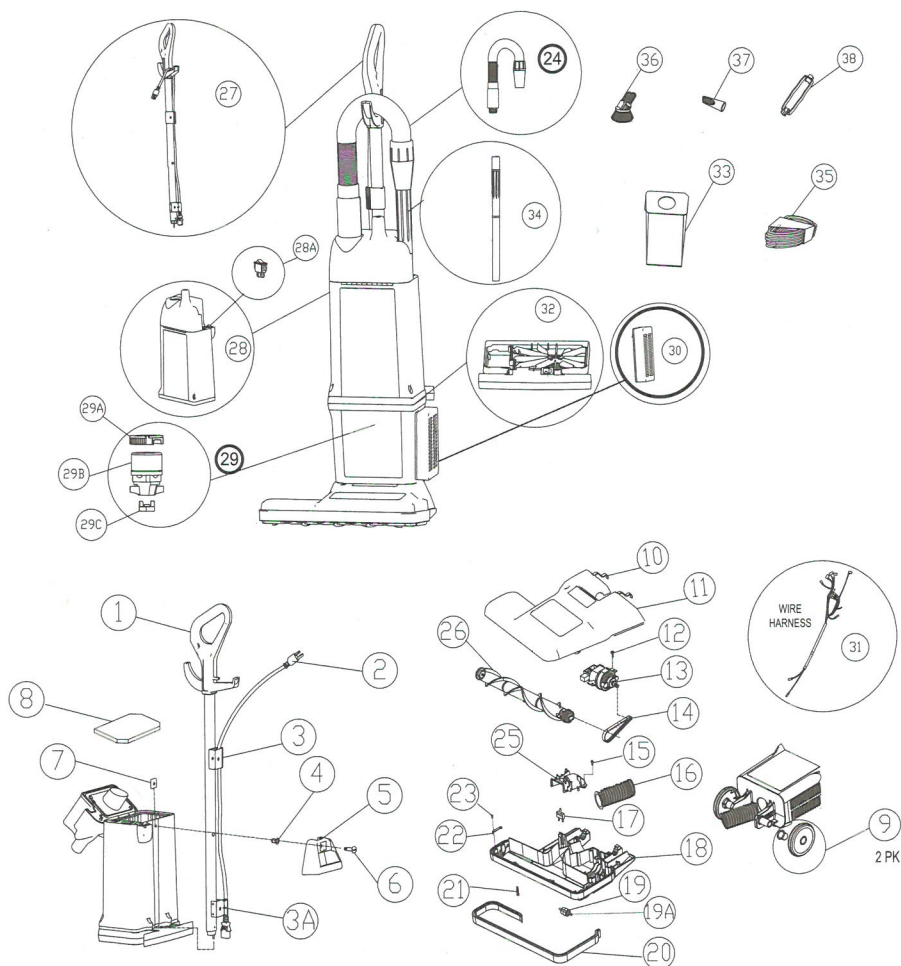
C CHANGING HEPA FILTER

- 1 Remove Hepa Filter by pushing down lightly on cover and pull away from unit.
- 2 Remove any excess foam tape from filter area.
- 3 Insert NEW Filter by pushing lightly on the filter until the tabs snap into place.

PROTECT YOUR MOTOR!
KEEP YOUR FILTERS CLEAN FOR OPTIMAL EFFICIENCY

PERFECT COMMERCIAL

DUAL-MOTOR UPRIGHT PARTS



DESCRIPTION

1	HANDLE GRIP
2	POWER CORD
3	UPPER CORD HOLDER WITH SCREW
3A	LOWER CORD HOLDER WITH SCREW
4	SLEEVE FOR HANDLE BOLT
5	CARRY HANDLE
6	HANDLE BOLT
7	SQUARE HANDLE NUT
8	FOAM FILTER BELOW BAG
9	REAR WHEELS WITH SLEEVE BEARING - 2 PCS EA./PACK
10	DETENT SPRING
11	PN HOOD WITH DETENT SPRINGS
12	SCREW-PN MOTOR
13	BRUSH ROLL MOTOR
14	BRUSH ROLL BELT
15	DUCT HOSE TOP COVER SCREW
16	DUCT HOSE WITH CUFF ASSEMBLY
17	CIRCUIT BREAKER 1.6A WITH SPACER
18	BASE ASSEMBLY - COMPLETE WITH BUMPER AND ROLLER GUIDE
19	FRONT ROLLER WHEEL
19A	FRONT ROLLER AXLE
20	BUMPER
21	BOTTOM BASE SCREW
22	BRUSH ROLL RETAINER
23	SCREW-RETAINER
24	ATTACHMENT HOSE
25	DUCT HOSE COVER
26	BRUSH ROLL COMPLETE
27	HANDLE ASSEMBLY COMPLETE
28	TOP BAG HOUSING COMPLETE WITH LID
28A	ON/OFF SWITCH
29	LOWER MOTOR HOUSING
29A	SUCTION END MOTOR HOUSING GASKET
29B	SUCTION MOTOR
29C	COMMUTATOR END GASKET
30	HEPA FILTER
31	WIRE HARNESS COMPLETE
32	BULKHEAD WITH ELECTRICAL RECEPTACLE
33	100 PK UPRIGHT BAG
33A	12 PK UPRIGHT BAG
34	PLASTIC WAND ASSEMBLY
35	50 FT - 18/3 EXTENSION CORD
36	COMBO DUST BRUSH / UPHOLSTERY TOOL
37	CREVICE TOOL
38	CORD CONNECTOR ASSEMBLY

MAINTENANCE

Warning: Avoid injury. Keep loose clothing, hair, fingers, and all other parts of body away from any moving part (such as the revolving brush). Disconnect vacuum from electrical outlet before attempting to service it in any manner.

CLEARING THE BRUSHROLL --

Make sure vacuum is unplugged and in the OFF position

Obstructions such as carpet fibers, strings, hair, throw rugs etc., may shut off brush roll motor. Turn vacuum over where the underside of the unit is facing you. Pull out or cut away obstructions from the brushroll area. Stand vacuum back upright. Plug in unit and turn on switch. Press reset button on top of vacuum hood to restart brushroll motor.

CLEARING THE HOSE AND WAND --

Make sure vacuum is unplugged and in the OFF position

Remove hose with wand from vacuum by unscrewing the hose from the bag housing. Look into hose and wand for any obstruction. Shake or insert a broom handle to clear any visible debris. Replace hose and wand on vacuum.

PICKING UP FINE POWDERS, SUBSTANCES, CARPET FRESH POWDERS, CAN CLOG THE FILTER BAG. --

Please remember to change bags often so that vacuum cleaner can operate at optimal efficiency.

**THE INSTRUCTIONS GIVEN IN THIS BOOKLET SERVE AS A GUIDE TO
ROUTINE MAINTENANCE. TO AVOID UNNECESSARY SERVICE CALLS,
CHECK THE BAG, FILTER AND BRUSHROLLS OFTEN.**

THE PERFECT COMMERCIAL LIMITED WARRANTY

WHAT THIS WARRANTY COVERS

Your Perfect commercial cleaner is warranted to be free from all defects in material and workmanship in normal use FOR A PERIOD OF ONE YEAR. The warranty is granted only to the original purchaser of the cleaner. The warranty is subject to the following provisions.

WHAT THIS WARRANTY DOES NOT COVER

- Parts of the cleaner that require replacement under normal use, such as bumpers, bags, brush rolls, and belts.
- Damages or malfunctions caused by negligence, abuse, or use not in accordance with the Owner's Guide.
- Defects or damages caused by unauthorized service or the use of other than Perfect parts.

WHAT THE PERFECT WILL DO

The IMIG Company will, at its option, repair or replace a defective cleaner or cleaner part that is covered by this warranty. As a matter of warranty policy, the IMIG Company will not refund the consumer's purchase price.

IMIG INC does not recognize internet sales, the warranty is null and void if the unit is purchased on E-Bay or Any other non authorized internet site.





MAIL:
303 Smith Street
Suite 4
Farmingdale, NY 11735

PHONE:
1-631-643-7060

FAX:
1-631-499-6634